



MV Juist



General Info

Built	2012
Flag	Antigua & Barbuda
IMO No.	9506112
Class	GL+100 A5 E3, IW, Strengthened for heavy cargo, equipped for carriage of containers, G, Solas II-2, Reg19, BWM, +MC E3 AUT, Great Lakes fitted
Type	5.670 dwt Multi-Purpose Carrier fitted with tweendecks and grainbulkheads

Hold & Hatches

Hatch	Hydraulic hatch covers; 2 multifolding pairs (4 covers) open to fwd., 2 mulifold pairs (4 covers) open to aft.
Hold equipment	CO2 and water sprinkler, smoke detector, ventilated with fans 20 times per hour
Dimensions holds	64,40 m x 13,20 m x 9,00 m; 52,5 m x 13,2 m boxshaped
IMO	fitted all classes as per ships specs. and certificates

Tween Decks

Moveable tween decks, positioning possible at 3.000mm and 5.400mm above tank top, also usable as grain bulkheads at various positions

Permissible loads

Tanktop	20,00 t / m ²
Tweendeck hatch	2,50 t / m ²
Weatherdeck hatch	2,00 t / m ²

Gear

2 hydraulic single cranes on portside
60 t at 19 m and 45 t at 26 m
min outreach 2,5 m

Containers

Hold	138 TEU
On deck	247 TEU
Total	385 TEU
Container loads	72t / TEU, 90t / FEU
Reefers	10 reefer plugs on deck

Tonnage

Dwt	5.670 mt w/o tween deck
GT / NT	4.591 / 1.966
Panama	3.941 t
Suez	4.591 t

Main Engine Data

Main engine	MAN 7L 32/40; 3.500 kW
Bow thruster	400 rpm
Low sulphur management	

Dimensions

LOA	108,20 m
LBP	102,60 m
Beam	16,60 m
Depth	8,80 m
Draft	6,50 m

Generators / Aux. Engine

Aux. engine	2 aux engines each 360 kW
Shaft generator	1 shaft gen. 500 kW
Emergency Genset	1 emerg. genset 100kW

Capacity

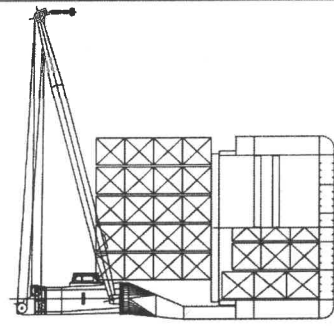
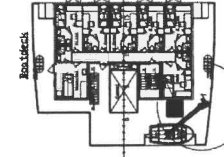
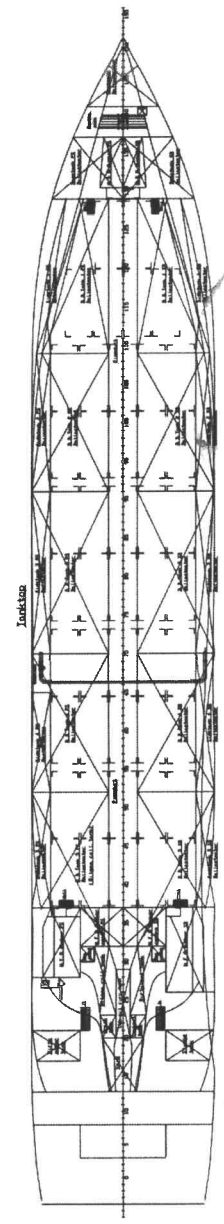
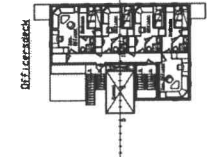
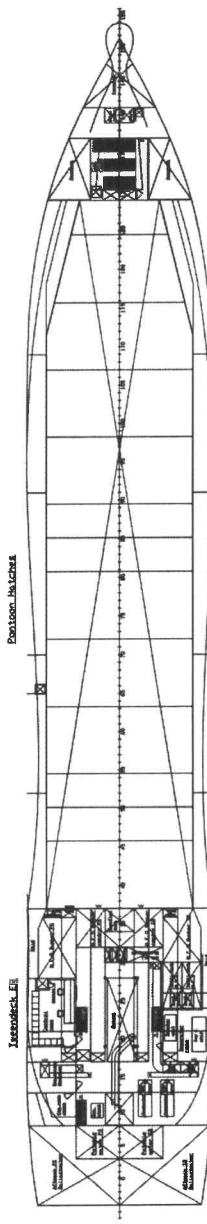
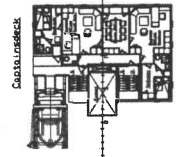
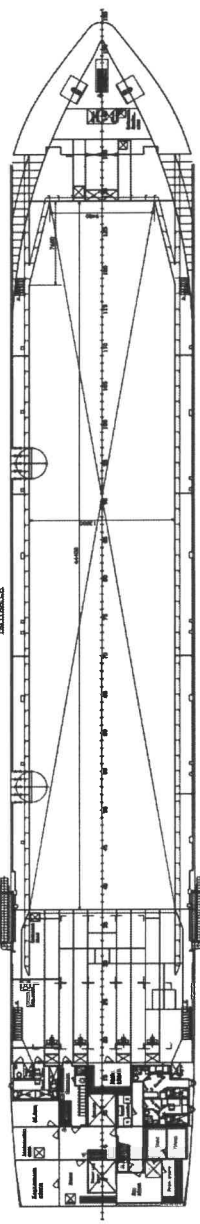
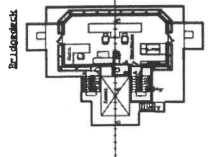
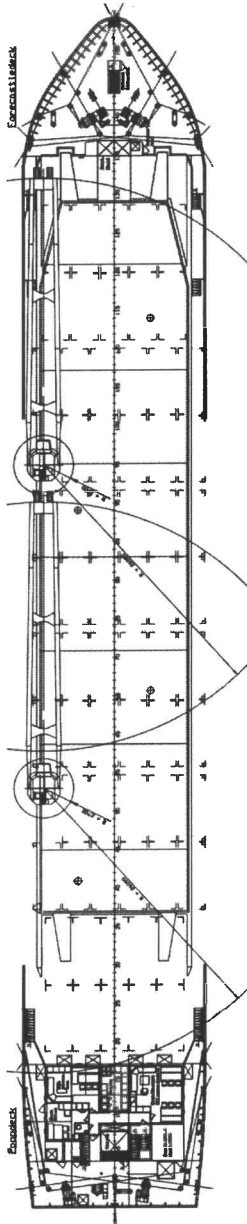
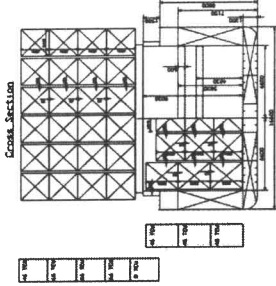
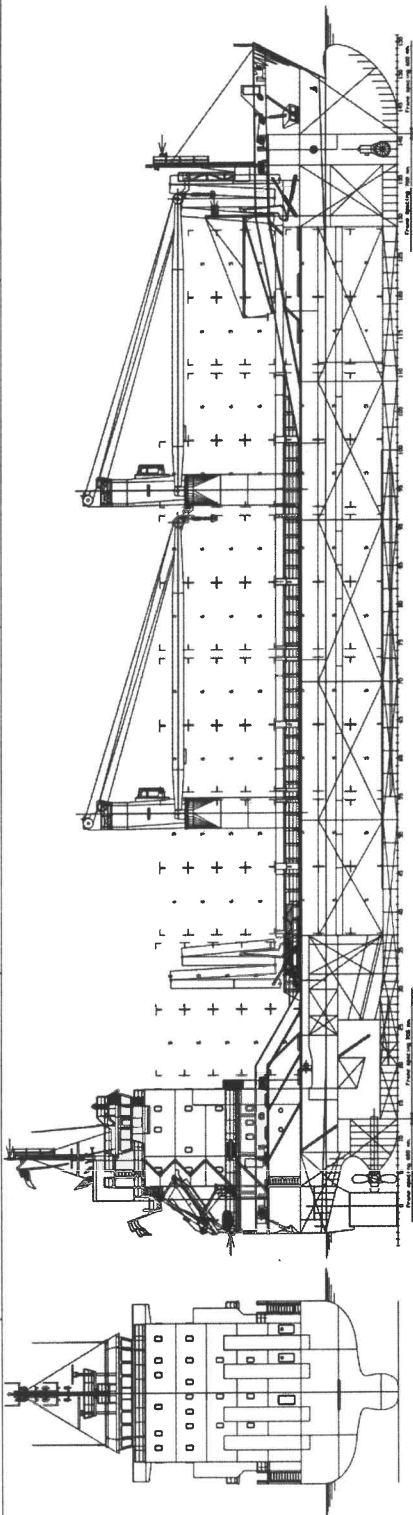
Bale 7.310 m³ resp. 258.150 cbft

Tank capacity

Fuel IFO	400,0 m ³
Fuel MDO	95,0 m ³
LO	27 m ³
Freshwater	80,8 m ³
Ballast	2.665,0 m ³

Speed consumption

abt. 14 kn at 15 mt IFO 380 cst/day
Cruising range 8.000 nautical miles



MAIN SPECIFICATIONS

Length over all	188.20 m.
Length between perpendiculars	135.60 m.
Beam	24.00 m.
Depth	8.50 m.
Registered Tonnage	5600 G.R.T.
Net Tonnage	3200 G.R.T.
Displacement	6800 G.R.T.
Engine	2 x 2000 H.P.
Speed	18 knots
Construction	Steel
Contractors in Hull	188 Ltd
Contractors in Machinery	200 Ltd
Engine	200 Ltd
Superstructure	450 Ltd

CONSTRUCTION
 GENERAL ARRANGEMENT
 SHEET NO. 100