



## **MV City of Hongkong**



### **General Info**

Built	2009
Flag	Antigua & Barbuda
IMO No.	9434462
Class	GL+100 A5 E 'Containership' IW Nav-O BWM-F Solas II-2/Reg. 19 + MC AUT
Type	Geared celled Container vessel 2600 TEU

### **Hold & Hatches**

Hold / Hatches	5 / 10
Hatch covers	weathertight steel pontoon covers
Type	Fully cellularized
Ventilation	Hold 1-2: 6 times/h Hold 3-5: 2 times/h

### **Tonnage**

Dwt	34.418 t
GT / NT	26.936 / 12.017

### **Dimensions**

Length over all	211,85 m
Breadth over all	29,80 m
Depth	16,70 m
Draught [S]	11,40 m
Draught [Ballast]	6,90 m
Sailing range	abt. 15.000 nautical miles

### **Tank capacity**

Fuel IFO	3.073,8 m <sup>3</sup>
Fuel MDO	398,3 m <sup>3</sup>
LO	452,1 m <sup>3</sup>
Freshwater	367,2 m <sup>3</sup>
Ballast	10.326,8 m <sup>3</sup>

### **Containers**

Deck	1.606 TEU
Hold	958 TEU
Total	2.564 TEU
Reefer Connect.	342 FEU

### **Gear**

Cranes	3 x 45 t SWL at 25 m (36 t SWL at 31 m)
--------	--

### **Main Engine Data**

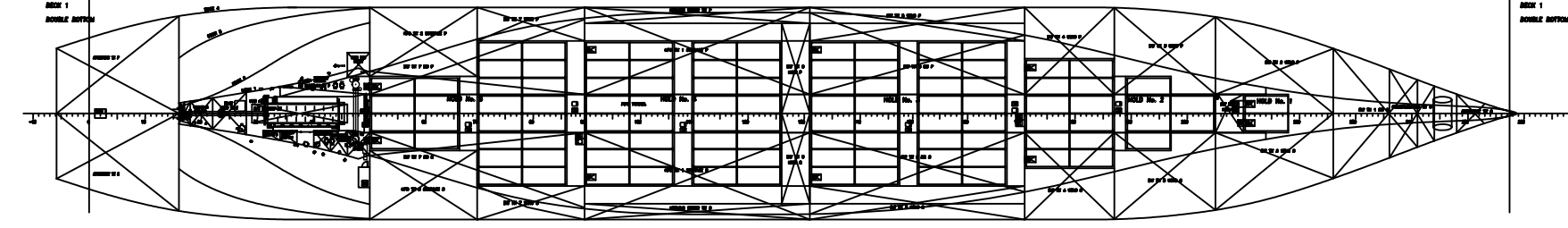
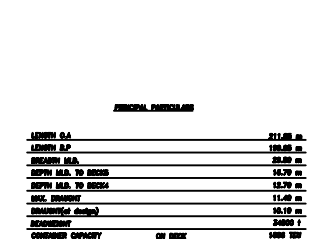
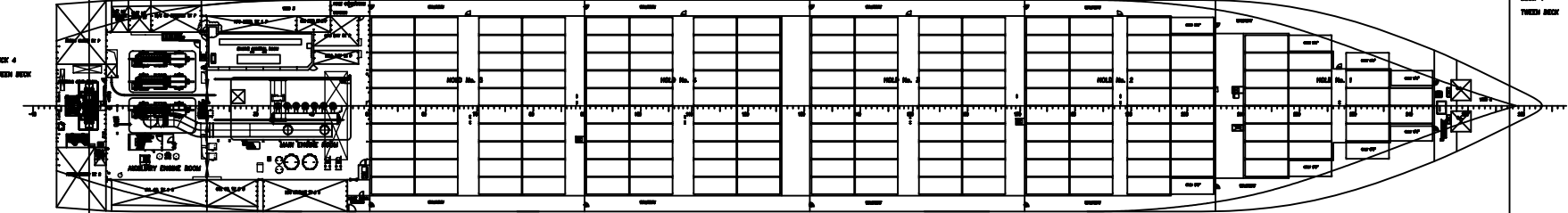
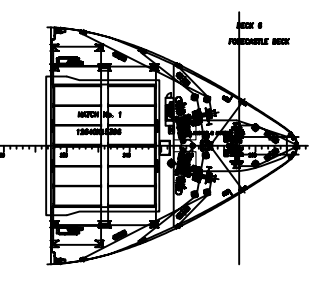
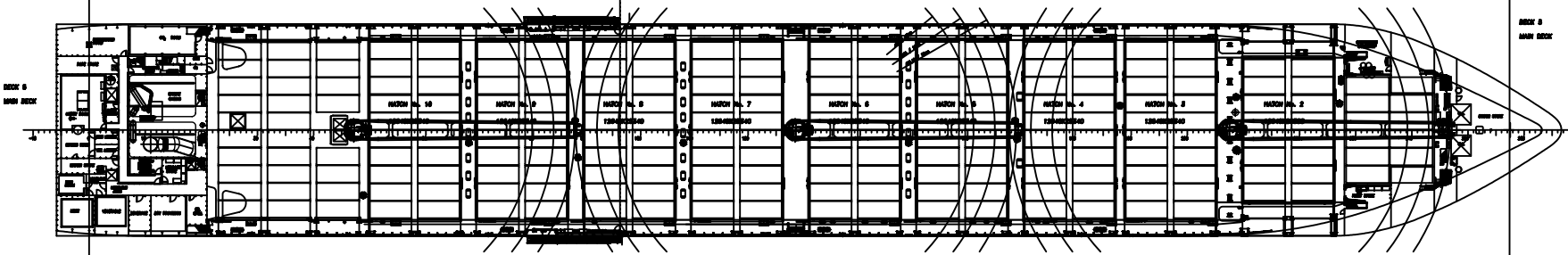
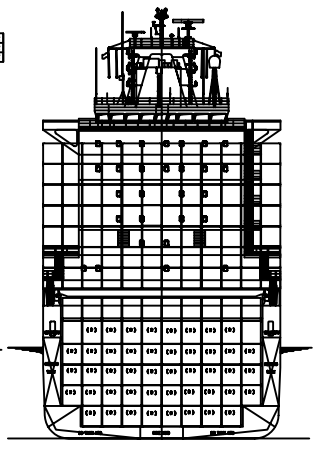
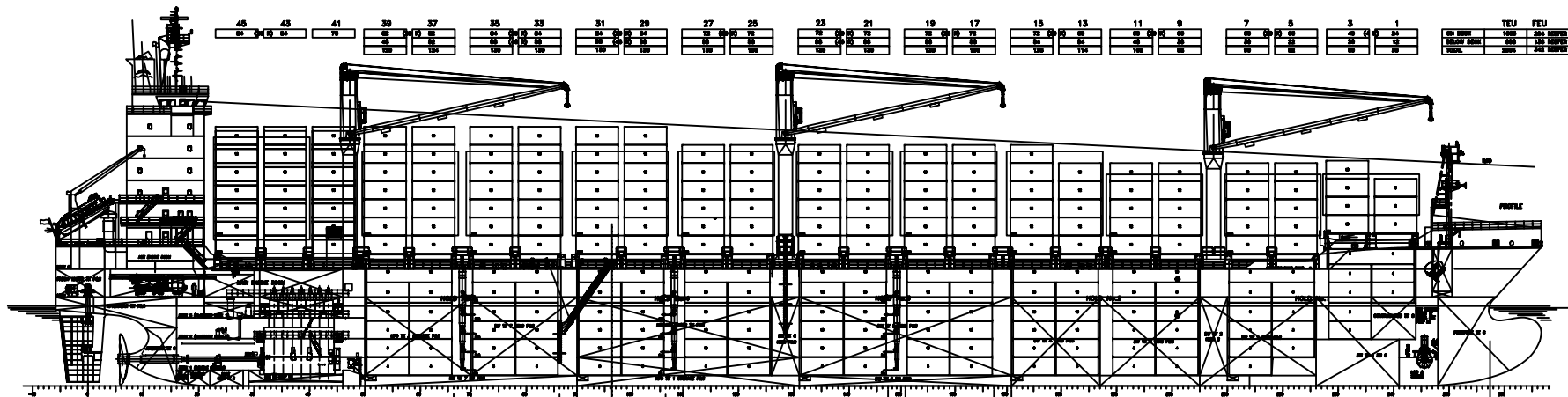
Main engine	Sulzer 7 RTA 72U-B; 21.560 kW
Bow thruster	1 x 1.100 kW

### **Aux. Engine / Emergency Engine**

Aux. engine	3 x 2.400 kW
Emergency engine	1 x 275 kW

### **Speed & Consumption**

22 kn at abt. 83 mt IFO 380 cst / day



**GENERAL PARTICULARS**

LENGTH O.A.	211.00 m.
LENGTH B.P.	195.00 m.
BREADTH M.A.	28.00 m.
DEPTH M.A. TO DECK	16.70 m.
DEPTH M.A. TO BULKHEAD	12.70 m.
NETT TONNAGE	11,400 t.
DISPLACEMENT (loaded)	16,100 t.
REGISTRATION	24000 T
CONSUMER CAPACITY	ON DECK 4000 TON
	IN COSSO HOLD 200 TON
	TOTAL 4200 TON
	140 IMMEDIATELY LOADED 140 TON
	NETT DEADWEIGHT 246 TONNAGE
MAIN ENGINE	Subco 752070-8 1 set
REV.	3170000 2 set 1/2 turn
CRU (CLASCO)	10 knots 1/2 set 1/2 turn
SPEED	(CLASCO) SEA MARCH 16.50 kn
COMPLIANT	SP P
CLASSIFICATION	CL. BUREAU V. COAST GUARD SHIP, R.C.
	IMP.-S. SOLAS 8-9, SOLAS, DIRV 8, IEC INT.

200 TON COAST GUARD VESSEL		DETAILED DESIGN	
GENERAL ARRANGEMENT PLAN		SC4370-100-04	
SCALE	1:100	DATE	1999
DESIGNER	11111111111111111111	DATE	1999
REVISION	11111111111111111111	DATE	1999
APPROVED	11111111111111111111	DATE	1999
DATE	11/11/11 14:00:00	DATE	1999
SCALE	1:100	SCALE	1:100