



MV Norderney



General Info

Built	2012
Flag	Antigua & Barbuda
IMO No.	9506124
Class	GL+100 A5 E3, IW, Strengthened for heavy cargo, equipped for carriage of containers, G, Solas II-2, Reg19, BWM, +MC E3 AUT, Great Lakes fitted
Type	5.670 dwt Multi-Purpose Carrier fitted with tweendecks and grainbulkheads

Hold & Hatches

Hatch	Hydraulic hatch covers; 2 multifolding pairs (4 covers) open to fwd., 2 mulifold pairs (4 covers) open to aft.
Hold equipment	CO2 and water sprinkler, smoke detector, ventilated with fans 20 times per hour
Dimensions holds	64,40 m x 13,20 m x 9,00 m; 52,5 m x 13,2 m boxshaped
IMO	fitted all classes as per ships specs. and certificates

Tween Decks

Moveable tween decks, positioning possible at 3.000mm and 5.400mm above tank top, also usable as grain bulkheads at various positions

Permissible loads

Tanktop	20,00 t / m ²
Tweendeck hatch	2,50 t / m ²
Weatherdeck hatch	2,00 t / m ²

Gear

2 hydraulic single cranes on portside
60 t at 19 m and 45 t at 26 m
min outreach 2,5 m

Containers

Hold	138 TEU
On deck	247 TEU
Total	385 TEU
Container loads	72t / TEU, 90t / FEU
Reefers	10 reefer plugs on deck

Tonnage

Dwt	5.670 mt w/o tween deck
GT / NT	4.591 / 1.966
Panama	3.941 t
Suez	4.591 t

Main Engine Data

Main engine	MAN 7L 32/40; 3.500 kW
Bow thruster	400 rpm
Low sulphur management	

Dimensions

LOA	108,20 m
LBP	102,60 m
Beam	16,60 m
Depth	8,80 m
Draft	6,50 m

Generators / Aux. Engine

Aux. engine	2 aux engines each 360 kW
Shaft generator	1 shaft gen. 500 kW
Emergency Genset	1 emerg. genset 100kW

Capacity

Bale 7.310 m³ resp. 258.150 cbft

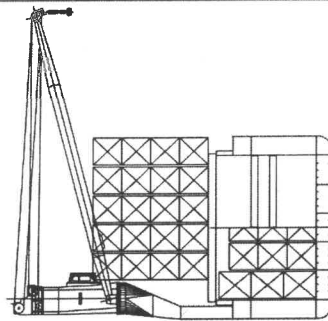
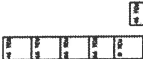
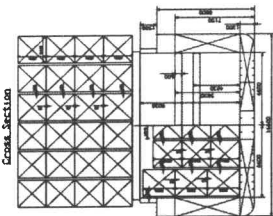
Tank capacity

Fuel IFO	400,0 m ³
Fuel MDO	95,0 m ³
LO	27 m ³
Freshwater	80,8 m ³
Ballast	2.665,0 m ³

Speed consumption

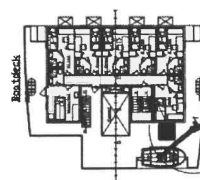
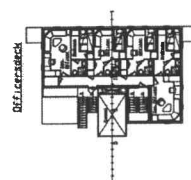
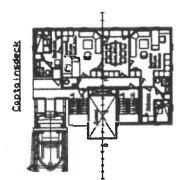
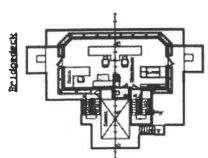
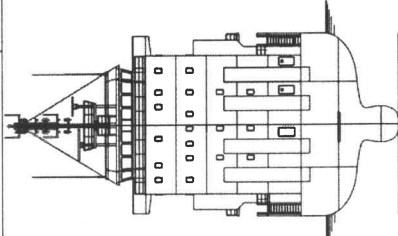
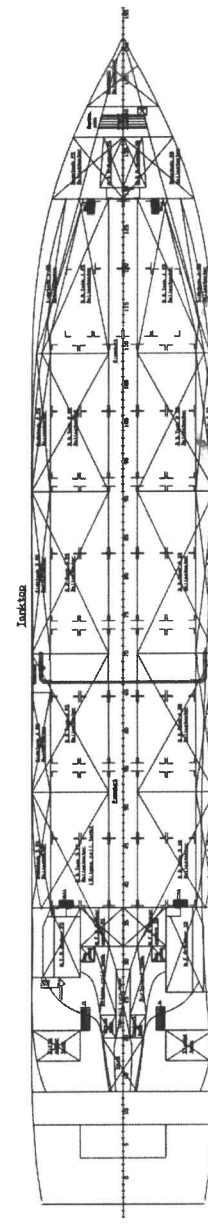
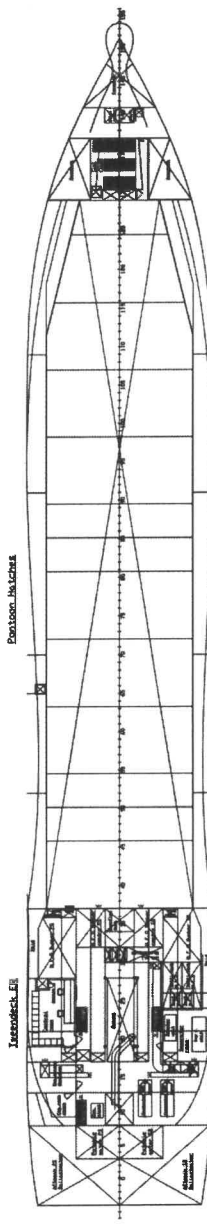
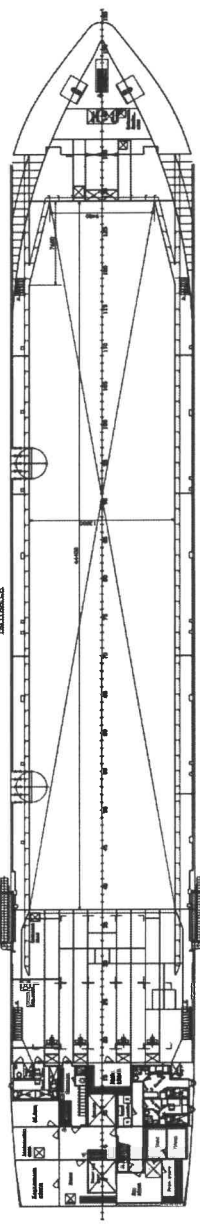
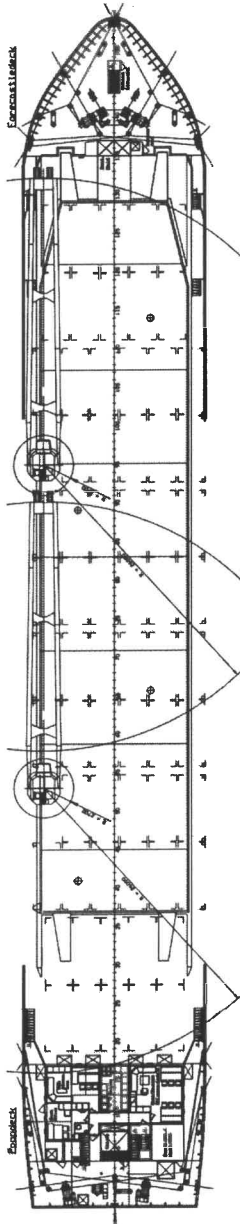
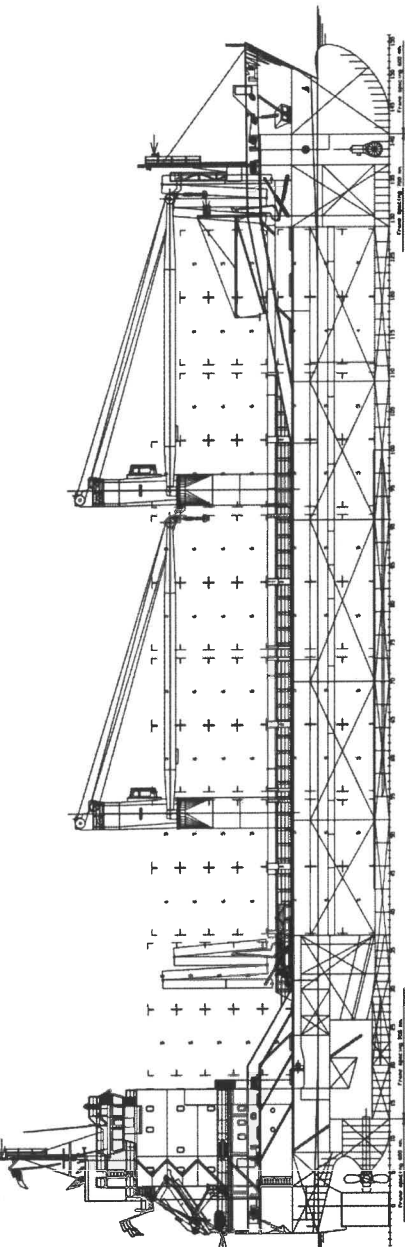
abt. 14 kn at 15 mt IFO 380 cst/day
Cruising range 8.000 nautical miles

Cross Section



MAIN RIGGING PLAN

Length over all	108.20 m.
Length between perpendiculars	102.00 m.
Beam	14.00 m.
Max. Draught	8.00 m.
Max. Draught all season	6.50 m.
* Gross Tonnage	5600 G.R.T.
** Net Tonnage	3000 G.R.T.
Ballastwater	6000 cu ft.
Displacement	8000 cu ft.
M.A.S. Capacity	7000 cu ft.
M.A.S. Capacity in Ballast	6000 cu ft.
Capacity in Ballast	1000 cu ft.
Capacity in Ballast	2000 cu ft.
Capacity in Ballast	4000 cu ft.
Capacity in Ballast	6000 cu ft.



GENERAL ARRANGEMENT
 COGNAC - THE NETHERLANDS
 General Arrangement
 Scale 1:100
 Date 1961
 No. 100