

CONTAINER STOWAGE

Bay 17 40,0 t	Bay 15 80,0t	Bay 13 80,0t	Bay 11 80,0t
Bay 16 45,0t		Bay 12 40,0t	

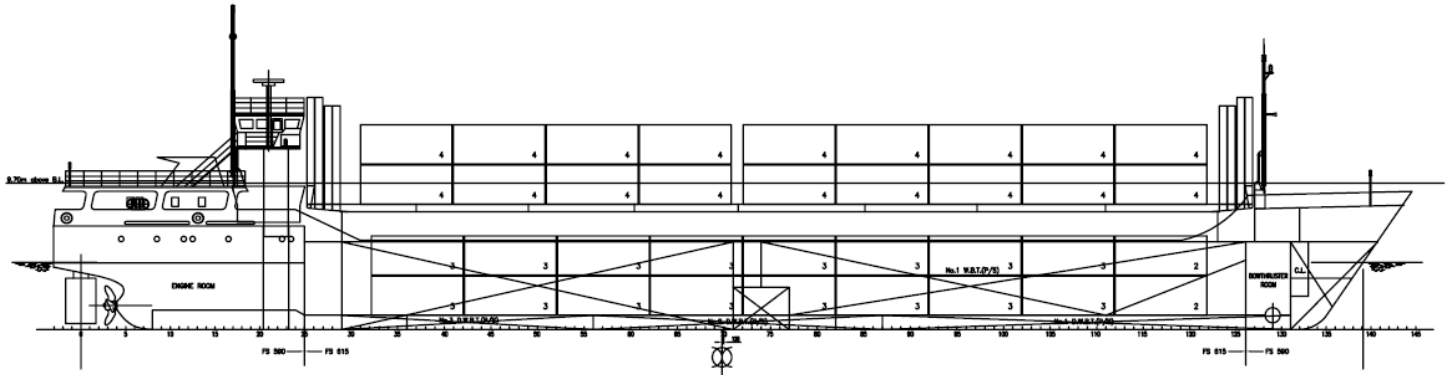
Bay 09 80,0t	Bay 07 80,0t	Bay 05 80,0t	Bay 03 80,0t	Bay 01 40,0t
Bay 08 40,0t		Bay 04 40,0t		

CONTAINER ON HATCH
20' Container with Stack Load
40' Container with Stack Load

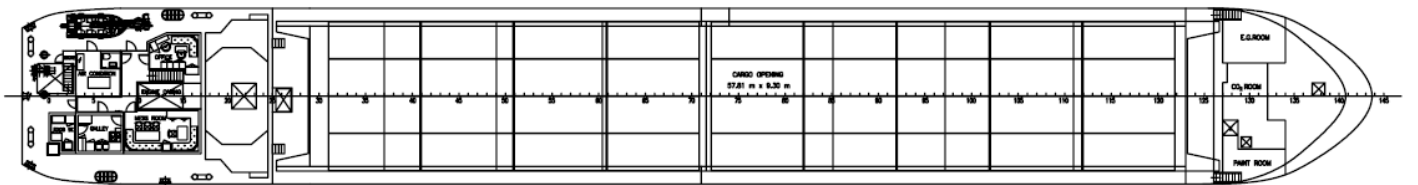
Bay 17 40,0 t	Bay 15 48,0t	Bay 13 48,0t	Bay 11 48,0t
Bay 16 61,0t		Bay 12 61,0t	

Bay 09 40,0t	Bay 07 48,0t	Bay 05 48,0t	Bay 03 48,0t	Bay 01 48,0t
Bay 08 61,0t		Bay 04 61,0t		

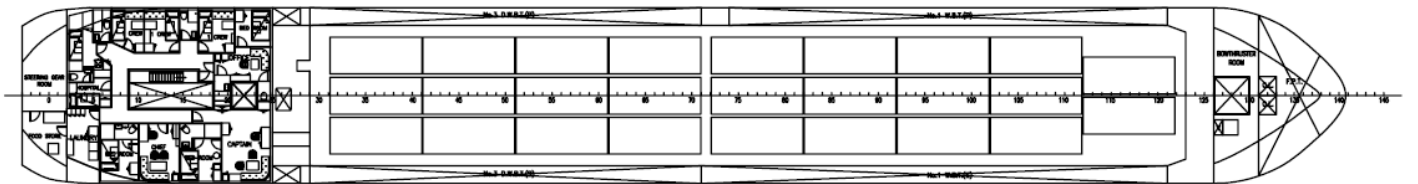
CONTAINER IN HOLD
20' Container with Stack Load
40' Container with Stack Load



MAIN DECK



TWEEN DECK



DOUBLE BOTTOM

HOLD COMPARTMENTS

Grain Bulkhead Position

Alt	fore
fr 29	A1
A1	A2
A2	A3
A3	A4
A4	B1
B1	B2
B2	B3
B3	B4
B4	fr. 126

Compartment Capacity

	m ³	cbf
A1	225,9	7999
A2	195,2	6910
A3	507,5	17966
A4	698,0	24707
B1	92,7	3265
B2	849,0	30055
B3	429,4	15202
B4	195,2	6910
	557,3	19829
Total	3750,2	132843

